

Latvia

ID_ABAZ_5045

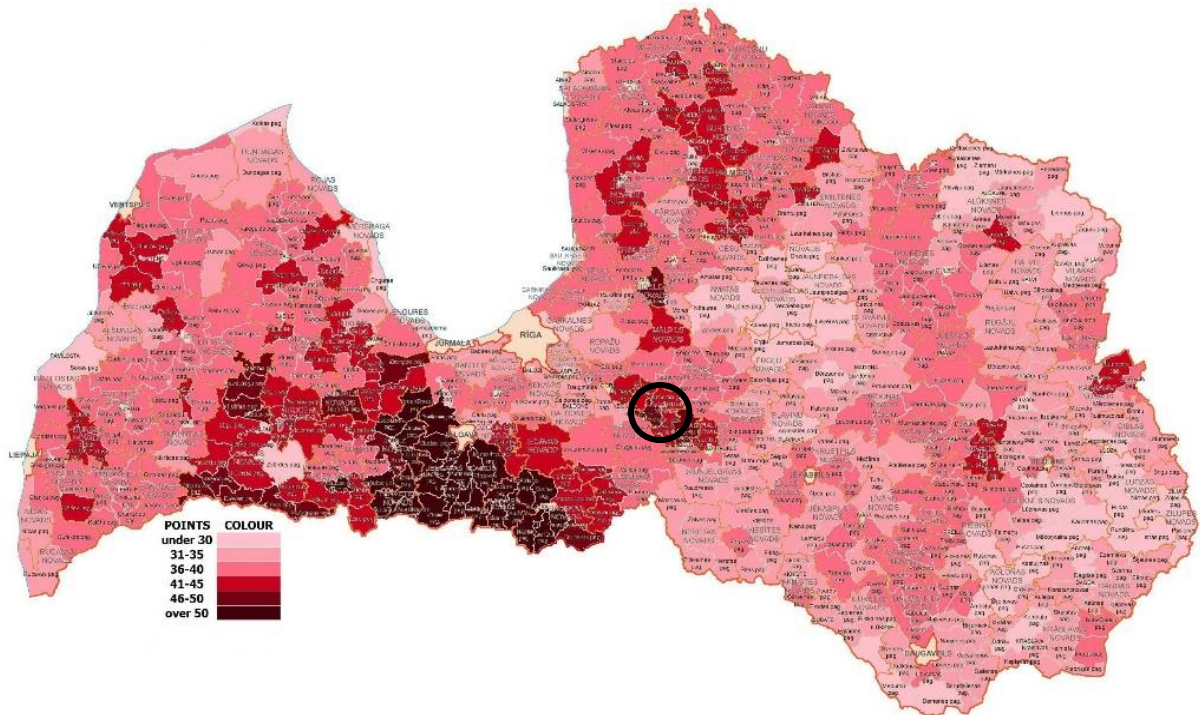
Last modified: 16.04.2024

OGRE REGION

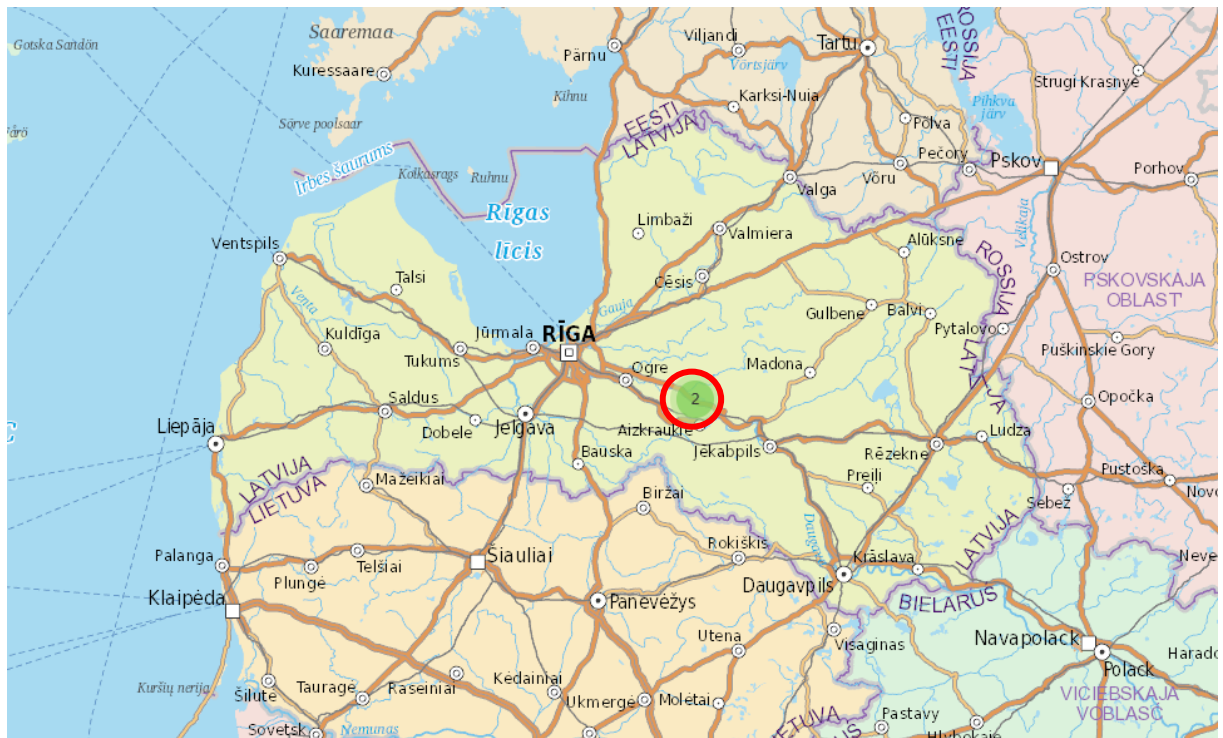
TOTAL AREA:	13.75 ha	
agricultural land	13.67 ha	
forest land		
other land	0.08 ha	
Sales price of object:	103 125 EUR	
ADDITIONAL COSTS FOR BUYER :	<p>BROKERAGE FEE: 5% + VAT LEGAL ASSISTANCE NOTARY SERVICES ESCROW ACCOUNT COSTS: 0.4-0.5 % (subj. of negotiations w/bank) TRANSACTION TAXES: stamp duty; title registration duty, if applicable EVT. DUE DILLIGENCE: legal, tax, technical</p>	
LAND BOOK REGISTRATION:	YES	
EU AREA PAYMENT REGISTRATION:	YES	
THE OFFICIAL LAND PRODUCTIVITY INDEX:	Dominating points: 40-45	
POSSIBLE USE OF PROPERTY:	Any type of agriculture activities	

DESCRIPTION AND LOCATION OF THE INVESTMENT PROPOSAL:

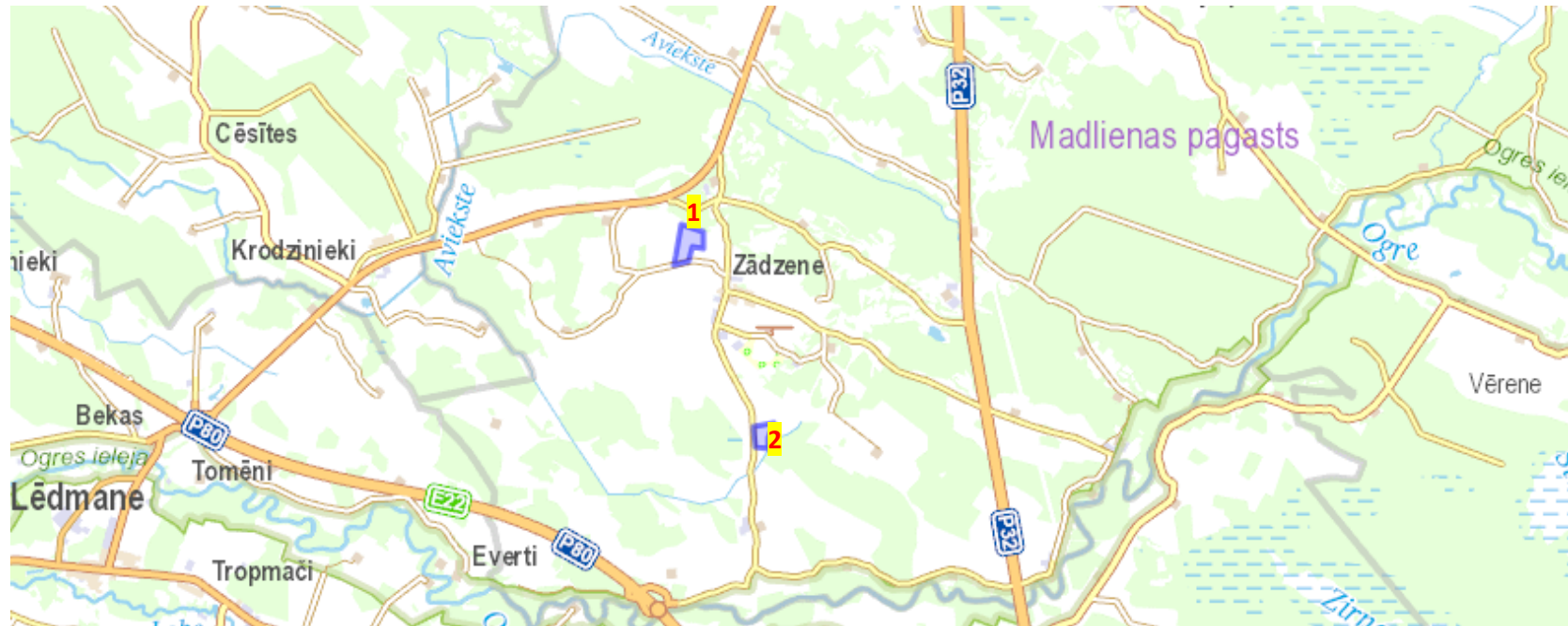
1. GENERAL LAYOT MAPS



Distance from Riga to object 73 km



2. MAP

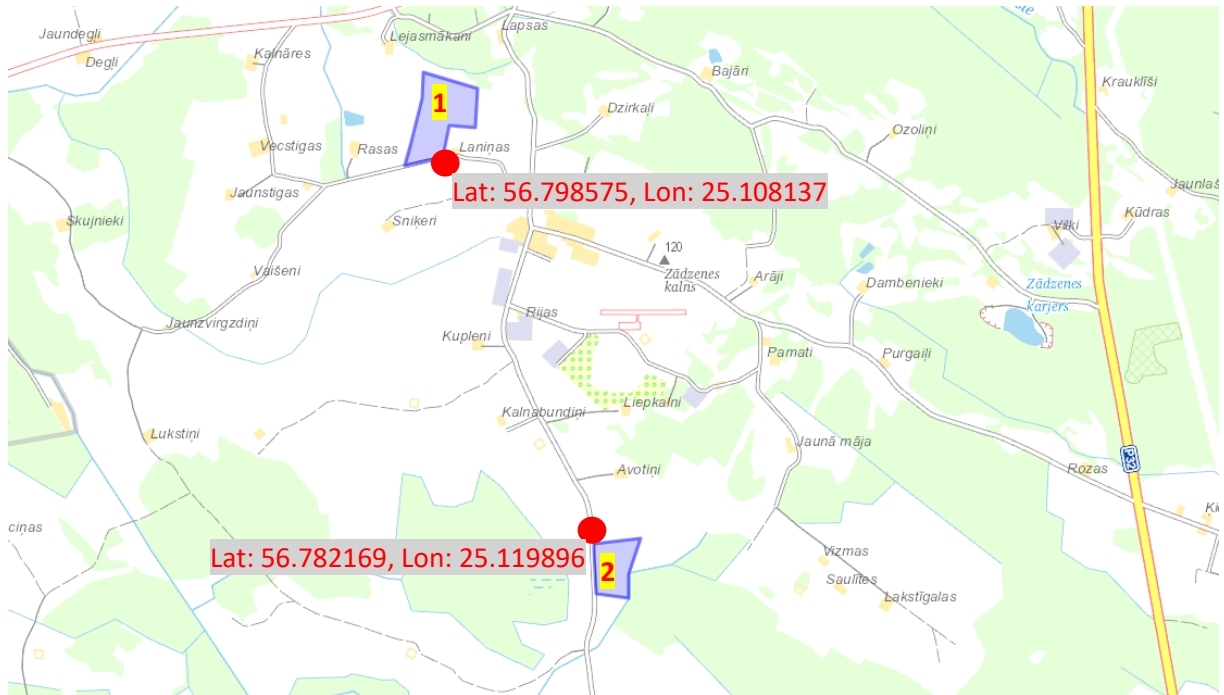


3. STRUCTURE OF PROPERTIES

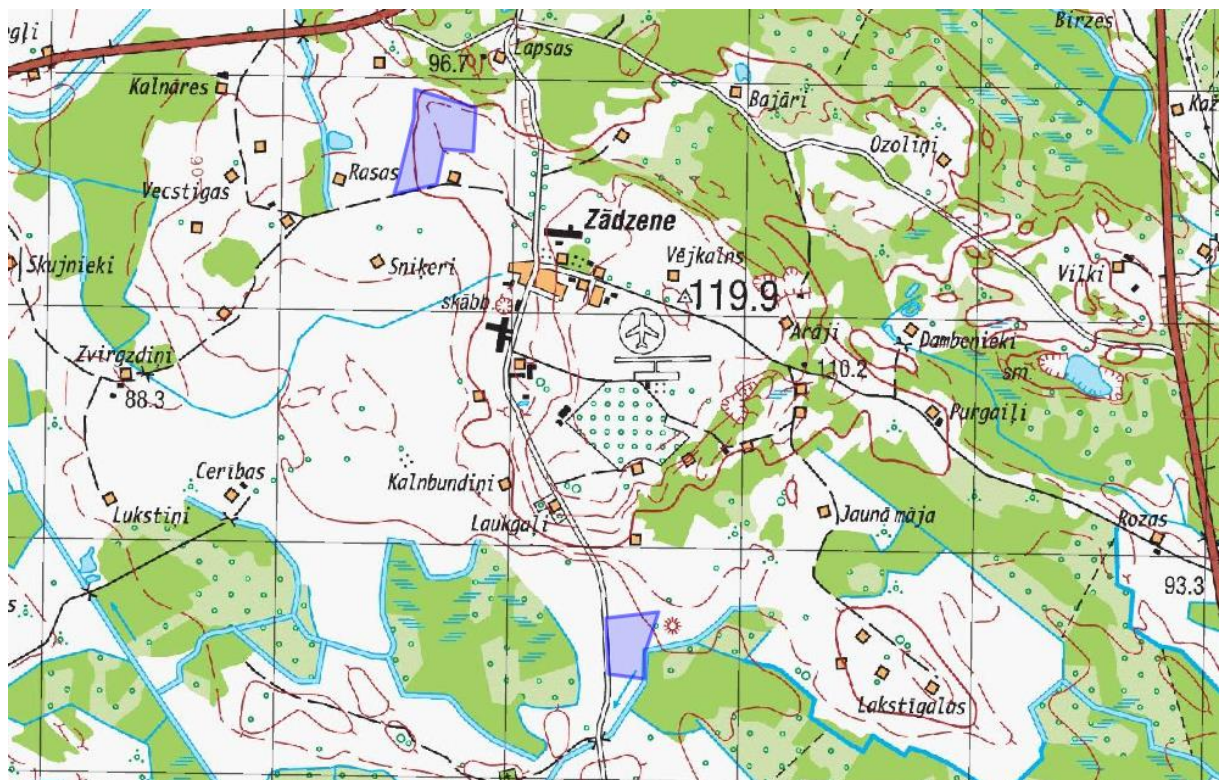
<i>Field No</i>	<i>Property name</i>	<i>Cadastral No</i>	<i>Total area, ha</i>	<i>Agri-land, ha</i>	<i>Meliorated</i>	<i>Forest</i>	<i>Swamp</i>	<i>Bushes</i>	<i>Under roads</i>	<i>Under buildings</i>	<i>Under water</i>	<i>Other</i>	<i>Agro-land productivity index</i>
1	Laiņas 2	74680080197	8.91	8.91	8.91								45
2	Stigas	74680080183	4.84	4.76	4.76						0.08		40
TOTAL:			13.75	13.67	13.67	0.00	0.00	0.00	0.00	0.00	0.08	0.00	

4. DETAILED MAPS

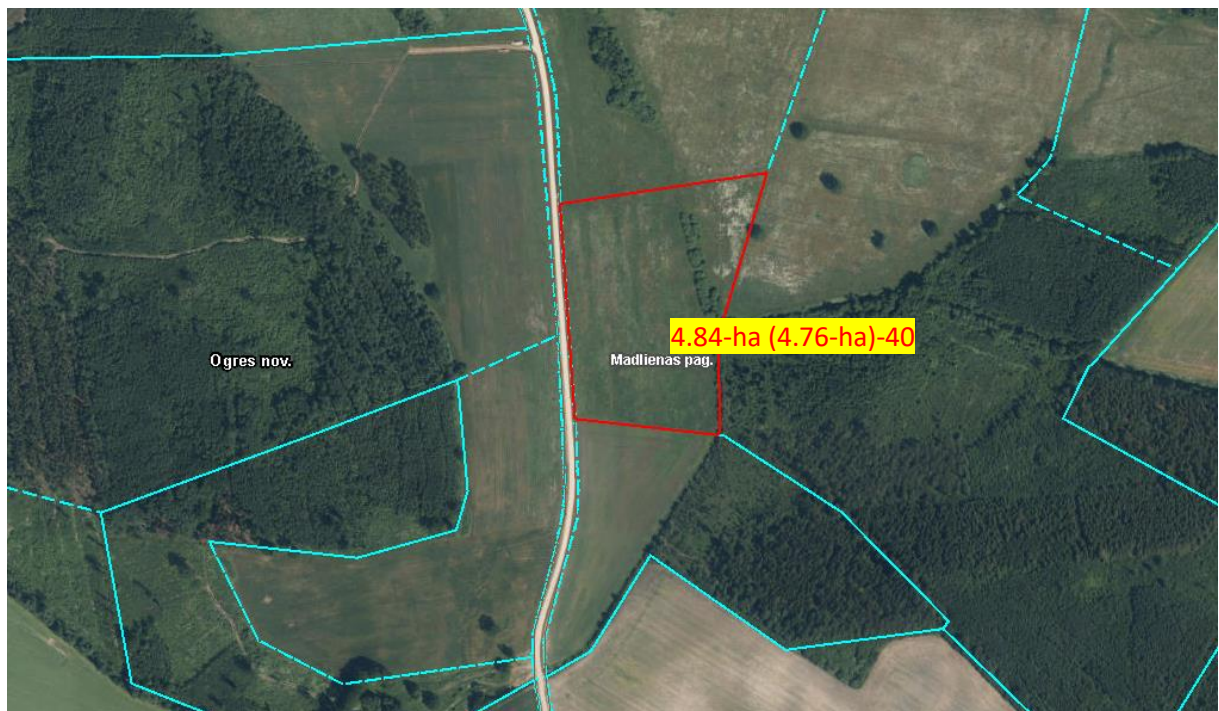
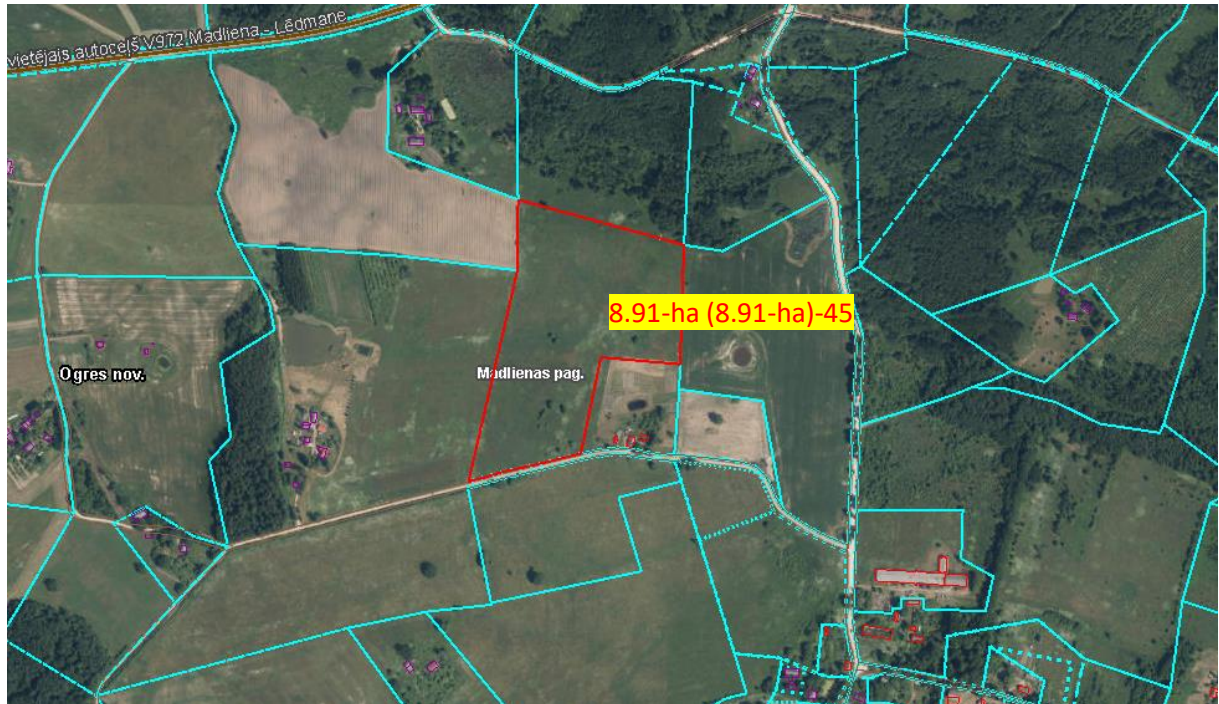
MAP



TOPO MAP



ORTHOPHOTO MAP



ActusQ is an agricultural investment advisory boutique with strong international network and proven track record. We are providing specialist advice and access to attractive investment opportunities in Latvia and Baltic's. Our clients include single European agricultural families, family offices, wealth managers, institutional investors and international organizations.

Our team possesses decades of agricultural advisory and investment experience, an entrepreneurial mind-set and passion for the sector. We bring together: finance and investment; private equity and operational improvement; risk management; strategy consulting; international network and access to local experts.

Over the past two decades, ActusQ has successfully guided family offices, wealth managers and institutional investors in building, managing and growing their investments in agriculture.

For further information please contact:

ActusQ SIA (LLC)

Valmieras street 20A, Cesis, LV-4101, Latvia

Phone: (+371) 64107185

Mobile: (+371) 26652300

(+371) 26681177

E-mail: actusQ@actusQ.lv

www.agriland.lv, www.actusQ.lv, www.aqlaw.lv